

MAGNA
950, 1000, 1100 & 1200 Series

- High Efficiency Glass Microfiber
- Heavy-Duty 3/4" Particleboard or Galvanized Metal Frames
- Two Part Polyurethane Sealant
- Standard Neoprene Gasketing
- High Capacity Filters Available

FEATURES

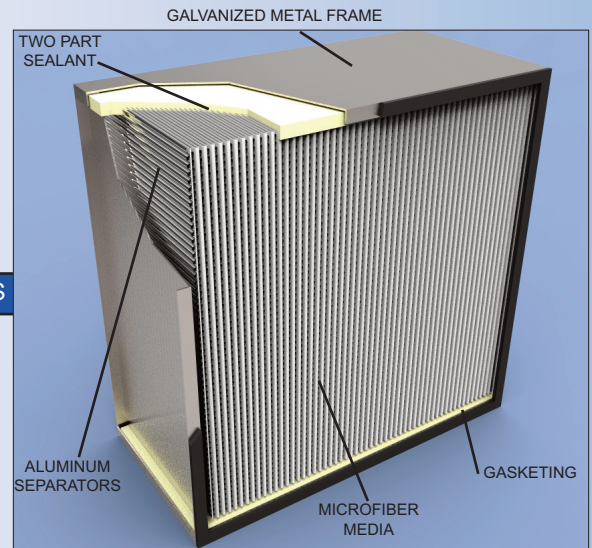


The Glasfloss Magna Series HEPA grade air filters are designed for high-efficiency commercial and industrial applications. Magna Series efficiency ranges include: 950 Series - 95% (MERV 16), 1000 Series - 99.97%, 1100 Series - 99.99% and 1200 Series - 99.999%, all based on a .30 micron particle. Glasfloss Magna filters are produced in a wide range of sizes, frame types and header combinations and are ideal for converting or upgrading existing systems. As an option, Glasfloss High-Capacity Magna filter models are also available for higher velocity applications and incorporate more media area for lower resistance.

The frame shall be made of a rigid high-density 3/4" particleboard or 18-gauge galvanized metal (26-gauge galvanized metal frame is used for the Magna 950 Series - 95% MERV 16). A 26-gauge galvanized steel header is available on the metal frame on 950 Series. The media shall be constructed of a water-resistant, inorganic glass microfiber. For quality assurance, the glass microfiber media rolls are randomly tested and certified to meet minimum efficiency requirements by the media manufacturer. The media pack shall consist of a continuous sheet of the pleated glass microfiber. The pleated media pack is separated with multiple rolled-edge corrugated aluminum separators. The media cartridge shall be sealed with a fire-retarding, rubber base, two-part sealant that bonds the media and separators to the interior of the frame. A 1/4" thick closed cell neoprene gasket shall be applied on the filter. The filter shall be rated to withstand temperatures at a continuous 180° Fahrenheit. The 95% (MERV 16), 99.97%, 99.99% and 99.999% Magna filters shall be Classified under U. L. Std. 900.



SPECIFICATIONS



| BASE MODEL NUMBER | SIZE H x W x D EXACT | RATED VELOCITY FPM | | | INITIAL RESIST. IN. W.G. | | | MEDIA SQUARE FEET | | | INITIAL RESIST. IN. W.G. | | | MEDIA SQUARE FEET | | |
|---|--------------------------|--------------------|-----|-----|--------------------------|------|-----|-------------------|--------|--------|--------------------------|------|------|-------------------|--------|--------|
| | | Std | HC | SHC | Std | HC | SHC | Std | HC | SHC | Std | HC | SHC | Std | HC | SHC |
| 950 Series - 95% (MERV 16) | | | | | | | | | | | | | | | | |
| Box Style | | | | | | | | | | | | | | | | |
| 0808A4 | 8 x 8 x 5-7/8 | 175 | - | - | 0.50 | - | - | 13.06 | - | - | - | - | - | - | - | - |
| 1212A4 | 12 x 12 x 5-7/8 | 175 | - | - | 0.50 | - | - | 29.75 | - | - | - | - | - | - | - | - |
| 2412A4 | 24 x 12 x 5-7/8 | 175 | - | - | 0.50 | - | - | 58.75 | - | - | - | - | - | - | - | - |
| 2418A4 | 24 x 18 x 5-7/8 | 175 | - | - | 0.50 | - | - | 88.13 | - | - | - | - | - | - | - | - |
| 2424A4 | 24 x 24 x 5-7/8 | 175 | - | - | 0.50 | - | - | 117.50 | - | - | - | - | - | - | - | - |
| 2430A4 | 24 x 30 x 5-7/8 | 175 | - | - | 0.50 | - | - | 146.88 | - | - | - | - | - | - | - | - |
| 2436A4 | 24 x 36 x 5-7/8 | 175 | - | - | 0.50 | - | - | 176.00 | - | - | - | - | - | - | - | - |
| 2448A4 | 24 x 48 x 5-7/8 | 175 | - | - | 0.50 | - | - | 235.00 | - | - | - | - | - | - | - | - |
| 1212B4 | 12 x 12 x 11-1/2 | 275 | 500 | - | 0.50 | 0.60 | - | 57.50 | 69.00 | - | - | - | - | - | - | - |
| 23F11FB4 | 23-3/8 x 11-3/8 x 11-1/2 | 275 | 500 | - | 0.50 | 0.60 | - | 106.17 | 127.40 | - | - | - | - | - | - | - |
| 2412B4 | 24 x 12 x 11-1/2 | 275 | 500 | - | 0.50 | 0.60 | - | 115.00 | 138.00 | - | - | - | - | - | - | - |
| 2418B4 | 24 x 18 x 11-1/2 | 275 | 500 | - | 0.50 | 0.60 | - | 172.50 | 207.00 | - | - | - | - | - | - | - |
| 23F23FB4 | 23-3/8 x 23-3/8 x 11-1/2 | 275 | 500 | - | 0.50 | 0.60 | - | 218.18 | 261.82 | - | - | - | - | - | - | - |
| 2424B4 | 24 x 24 x 11-1/2 | 275 | 500 | - | 0.50 | 0.60 | - | 230.00 | 276.00 | - | - | - | - | - | - | - |
| 2430B4 | 24 x 30 x 11-1/2 | 275 | 500 | - | 0.50 | 0.60 | - | 287.50 | 345.00 | - | - | - | - | - | - | - |
| 1000 Series - 99.97%, 1100 Series - 99.99% | | | | | | | | | | | | | | | | |
| Box Style | | | | | | | | | | | | | | | | |
| Flush Box Style | | | | | | | | | | | | | | | | |
| 0808A5 | 8 x 8 x 5-7/8 | 175 | - | - | 0.79 | - | - | 7.87 | - | - | 0.75 | - | - | 9.72 | - | - |
| 1212A5 | 12 x 12 x 5-7/8 | 175 | - | - | 0.79 | - | - | 20.93 | - | - | 0.75 | - | - | 23.92 | - | - |
| 1818A5 | 18 x 18 x 5-7/8 | 175 | - | - | 0.79 | - | - | 51.68 | - | - | 0.75 | - | - | 56.38 | - | - |
| 2412A5 | 24 x 12 x 5-7/8 | 175 | - | - | 0.79 | - | - | 70.47 | - | - | 0.75 | - | - | 75.17 | - | - |
| 2418A5 | 24 x 18 x 5-7/8 | 175 | - | - | 0.79 | - | - | 44.84 | - | - | 0.75 | - | - | 47.83 | - | - |
| 2424A5 | 24 x 24 x 5-7/8 | 175 | - | - | 0.79 | - | - | 96.09 | - | - | 0.75 | - | - | 102.50 | - | - |
| 2430A5 | 24 x 30 x 5-7/8 | 175 | - | - | 0.79 | - | - | 123.32 | - | - | 0.75 | - | - | 129.73 | - | - |
| 2436A5 | 24 x 36 x 5-7/8 | 175 | - | - | 0.79 | - | - | 148.95 | - | - | 0.75 | - | - | 155.35 | - | - |
| 2448A5 | 24 x 48 x 5-7/8 | 175 | - | - | 0.79 | - | - | 200.20 | - | - | 0.75 | - | - | 206.60 | - | - |
| 2460A5 | 24 x 60 x 5-7/8 | 175 | - | - | 0.79 | - | - | 253.05 | - | - | 0.75 | - | - | 397.83 | - | - |
| *2472A5 | 24 x 72 x 5-7/8 | 175 | - | - | 0.79 | - | - | 304.30 | - | - | 0.75 | - | - | 476.41 | - | - |
| 1212B5 | 12 x 12 x 11-1/2 | 275 | 500 | 500 | 0.79 | 1.3 | 1.2 | 49.00 | 57.75 | 64.75 | 0.75 | 1.25 | 1.15 | 56.00 | 66.50 | 73.50 |
| 23F11FB5 | 23-3/8 x 11-3/8 x 11-1/2 | 275 | 500 | 500 | 0.79 | 1.3 | 1.2 | 97.87 | 116.12 | 129.39 | 0.75 | 1.25 | 1.15 | 104.51 | 122.76 | 137.68 |
| 2412B5 | 24 x 12 x 11-1/2 | 275 | 500 | 500 | 0.79 | 1.3 | 1.2 | 105.00 | 126.00 | 141.75 | 0.75 | 1.25 | 1.15 | 112.00 | 133.00 | 148.75 |
| 2418B5 | 24 x 18 x 11-1/2 | 275 | 500 | 500 | 0.79 | 1.3 | 1.2 | 157.50 | 189.00 | 212.63 | 0.75 | 1.25 | 1.15 | 168.00 | 199.50 | 223.13 |
| 23F23FB5 | 23-3/8 x 23-3/8 x 11-1/2 | 275 | 500 | 500 | 0.79 | 1.3 | 1.2 | 201.12 | 238.62 | 265.89 | 0.75 | 1.25 | 1.15 | 214.76 | 252.26 | 282.93 |
| 2424B5 | 24 x 24 x 11-1/2 | 275 | 500 | 500 | 0.79 | 1.3 | 1.2 | 210.00 | 252.00 | 283.50 | 0.75 | 1.25 | 1.15 | 224.00 | 266.00 | 297.50 |
| 2430B5 | 24 x 30 x 11-1/2 | 275 | 500 | 500 | 0.79 | 1.3 | 1.2 | 269.50 | 318.50 | 357.00 | 0.75 | 1.25 | 1.15 | 283.50 | 336.00 | 371.00 |

For 1100 Series - 99.99% replace 5 with 6 in the base part number.

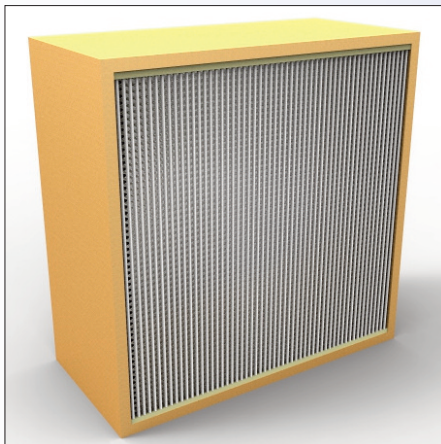
| 1200 Series - 99.999% | | | | | Box Style | | | | | | Flush Box Style | | | | | |
|-----------------------|--------------------------|-----|-----|---|-----------|------|---|--------|--------|---|-----------------|------|---|--------|--------|---|
| 1212B7 | 12 x 12 x 11-1/2 | 275 | 500 | - | 0.90 | 1.54 | - | 49.00 | 57.75 | - | 0.85 | 1.49 | - | 56.00 | 66.50 | - |
| 23F11FB7 | 23-3/8 x 11-3/8 x 11-1/2 | 275 | 500 | - | 0.90 | 1.54 | - | 97.87 | 116.12 | - | 0.85 | 1.49 | - | 104.51 | 122.76 | - |
| 2412B7 | 24 x 12 x 11-1/2 | 275 | 500 | - | 0.90 | 1.54 | - | 105.00 | 126.00 | - | 0.85 | 1.49 | - | 112.00 | 133.00 | - |
| 2418B7 | 24 x 18 x 11-1/2 | 275 | 500 | - | 0.90 | 1.54 | - | 157.50 | 189.00 | - | 0.85 | 1.49 | - | 168.00 | 199.50 | - |
| 23F23FB7 | 23-3/8 x 23-3/8 x 11-1/2 | 275 | 500 | - | 0.90 | 1.54 | - | 201.12 | 238.62 | - | 0.85 | 1.49 | - | 214.76 | 252.26 | - |
| 2424B7 | 24 x 24 x 11-1/2 | 275 | 500 | - | 0.90 | 1.54 | - | 210.00 | 252.00 | - | 0.85 | 1.49 | - | 224.00 | 266.00 | - |
| 2430B7 | 24 x 30 x 11-1/2 | 275 | 500 | - | 0.90 | 1.54 | - | 269.50 | 318.50 | - | 0.85 | 1.49 | - | 283.50 | 336.00 | - |

*Available in particle board only. Tolerances shall be +/- 1/16" for height and width. The frame depth shall not exceed 5-7/8" and 11-1/2".
Hi Capacity contains approx. 20% more media, Super High Capacity contains approx. 35% more media.

PART NUMBER CONFIGURATION

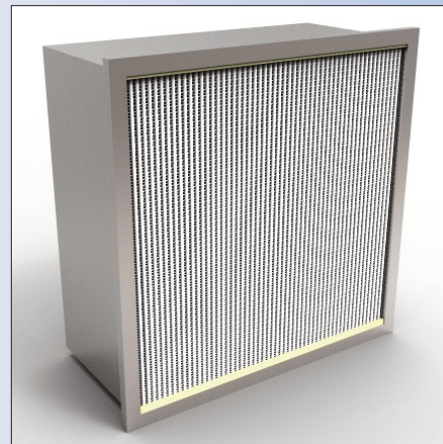
| PREFIX | FRAME MATERIAL | FRAME STYLE | BASE MODEL NUMBER | GASKET LOCATION | FACE GUARDS | CAPACITY | |
|---------------------------------|--|---|---|--|--|---|---|
| <input type="checkbox"/> MAG | <input type="checkbox"/> P = PARTICLE BOARD G = GALVANIZED METAL | <input type="checkbox"/> B = BOX STYLE H = SINGLE HEADER D = DOUBLE HEADER FX = FLUSH BOX | <input type="checkbox"/> SELECT BASE MODEL NO. FROM CHART FOR DESIRED SIZE AND EFFICIENCY OR INSERT EXACT SIZE AND EFFICIENCY FOR SPECIAL SIZE MAGNA FILTERS | <input type="checkbox"/> O = NO GASKET BOX STYLE A = AIR EXIT B = AIR ENTRY C = AIR EXIT/ENTRY D = SIDE LOAD SINGLE HEADER E = AIR ENTRY/EXIT F = AIR ENTRY H = AIR EXIT J = SIDE LOAD S = ONE VERTICAL SIDE | <input type="checkbox"/> DOUBLE HEADER K = AIR ENTRY / EXIT M = AIR ENTRY P = AIR EXIT Q = SIDE LOAD | <input type="checkbox"/> X = NONE 1 = BACK SIDE 2 = FRONT SIDE 3 = BOTH SIDES | <input type="checkbox"/> BLANK = REGULAR CAPACITY L = LOW CAPACITY H = HIGH CAPACITY S = SUPER HIGH CAPACITY. |

PARTICLE BOARD BOX
950 (MERV 16), 1000 and 1100 Series



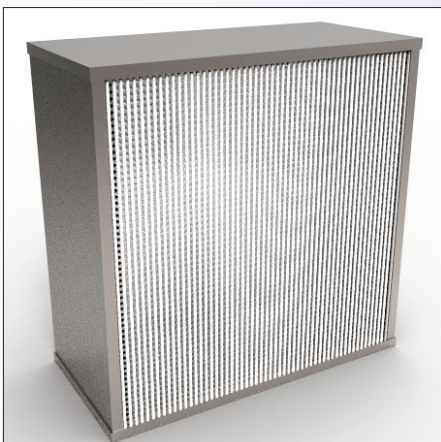
Air Flow
←
Side View

METAL SINGLE HEADER
950 Series (MERV 16)



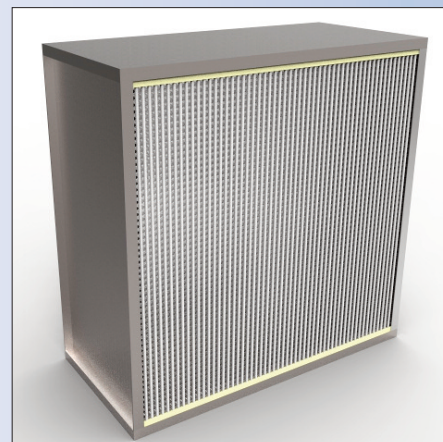
Air Flow
←
Side View

METAL FLUSH BOX - 1000, 1100 & 1200 Series
METAL BOX - 950 Series (MERV 16)



Air Flow
←
Side View

METAL BOX
1000, 1100 & 1200 Series



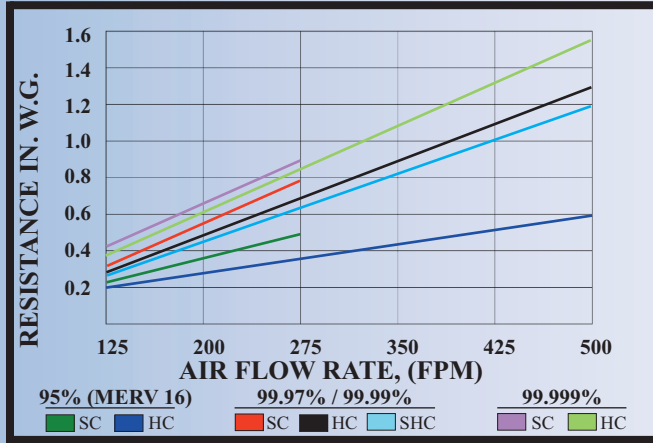
Air Flow
←
Side View

"Serving You With Locations Throughout The Nation"

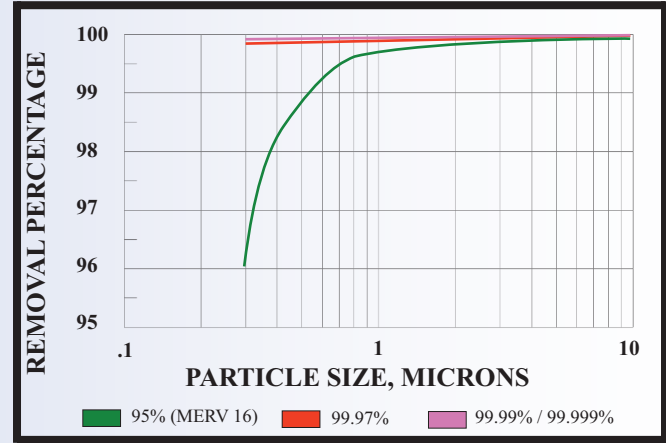
Glasfloss has a policy of uninterrupted research, development and product improvement and reserves the right to change design and specifications without notice.

www.glasfloss.com · (214) 741-7056

STANDARD PRESSURE DROP
Test Filter Size 24" x 24" x 12" Nominal



MINIMUM PARTICLE SIZE EFFICIENCY
Test Filter Size 24" x 24" Nominal



Features:

- Quality Assurance - the Magna 950 Series - 95% (MERV 16), 1000 Series - 99.97%, 1100 Series - 99.99% and 1200 Series - 99.999% filters incorporate glass microfiber media rolls that are randomly tested and certified to meet minimum efficiency requirements by the media manufacturer. In addition, Glasfloss randomly selects and tests filters for leaks under a rigorous quality control program.
- Media produced from glass microfibers is moisture-resistant and will not support microbial growth.
- Magna 99.99% and 99.999% filters are tested for leaks based on near-monodispersed .30 micron size particles.
- Frame is available in either 3/4" particleboard or 18 gauge galvanized metal for the 1000 Series - 99.97%, and 1100 Series - 99.99%. The 1200 Series - 99.999% is available in metal frame only. A 26-gauge galvanized metal frame is used for the Magna 950 Series - 95% (MERV 16).
- Aluminum separators incorporate rolled edges that help prevent media chaffing and damage in handling.
- The filter cartridge is bonded within the frame using a two-part sealant that isolates the filter from external shock and prevents air bypass.
- Neoprene closed-cell gasket is standard on each filter.

Optional Features:

- Upon request, the Magna 950 Series - 95% (MERV 16), 1000 Series - 99.97% shall be individually tested for leaks based on near-monodispersed .30 micron size particles; additional charges apply.
- An expanded metal wire lath face guard can be placed on the air-entry and/or the air-exit side of the filter.
- High-capacity and turbine-style filters are available.

SPECIFICATIONS FOR MAGNA SERIES

The filter element shall be factory-constructed by pleating a continuous sheet of glass microfiber media into uniform spaced pleats which are separated by rolled-edge corrugated aluminum. The efficiency shall be 95% (MERV 16), 99.97%, 99.99% or 99.999% based on a near-monodispersed .30 micron size particle. This filter pack shall be encased in a rigid frame of 3/4" particleboard or 18-gauge galvanized steel for the 1000 Series - 99.97%, 1100 Series - 99.99% and 1200 Series - 99.999% (metal frame only) efficiencies (26-gauge galvanized metal frame is used for the 950 Series - 95% MERV 16). The frame shall not exceed 5-7/8" or 11-1/2" in depth, and standard tolerances shall be +/- 1/16" on height and width. A closed-cell neoprene gasket shall be applied to the filter. Each filter shall be packaged into a heavy-duty carton. Filters shall be Classified under U. L. Std. 900.



Glasfloss is proud to be an Energy Star Partner. The Energy Star Service and Product Provider Partnership is available to organizations that provide energy efficiency related products and/or services to the commercial buildings and industrial plants in the United States.



Glasfloss manufactures a variety of medium and high efficiency air filters which can be specified for LEED certification applications. For specific information on these products, please contact your local Glasfloss Sales Representative.



Distributed by:



"Serving You With Locations Throughout The Nation"